

BALDOR • RELIANCE

Customer information packet

XM28262T

20//15HP, 1180//980RPM, 3PH, 60//50HZ, 286T

Class - CLI GP D; CLII GP F,G

Division - Division I

Specifications

Enclosure	XPFC
Frame	286T
Frame Material	Iron
Frequency	50.00 Hz 60.00 Hz
Motor Letter Type	Three Phase
Output @ Frequency	15.000 HP @ 50 HZ 20.000 HP @ 60 HZ
Phase	3
Synchronous Speed @ Frequency	1200 RPM @ 60 HZ
Voltage @ Frequency	380.0 V @ 50 HZ 230.0 V @ 60 HZ 190.0 V @ 50 HZ 460.0 V @ 60 HZ
XP Class and Group	CLI GP D; CLII GP F,G
XP Division	Division I
Agency Approvals	CSA UR CSA EEV
Ambient Temperature	40 °C
Auxillary Box	No Auxillary Box
Auxillary Box Lead Termination	None
Base Indicator	Rigid
Bearing Grease Type	Polyrex EM (-20F +300F)
Blower	None
Constant Torque Speed Range	6
Current @ Voltage	52.000 A @ 230.0 V 48.000 A @ 190.0 V 26.000 A @ 460.0 V 24.000 A @ 380.0 V
Design Code	A
Drip Cover	No Drip Cover

Part detail

Revision	B
Type	AC
Mech. spec.	
Base	
Status	PRD/A
Elec. spec.	10WGX978
Layout	10LYE106
Eff. date	07-17-2023
CD Diagram	CD0180
Poles	06
Leads	9#10
Proprietary	False
Created date	05-05-2021

Duty Rating	CONT
Efficiency @ 100% Load	93.0 %
Electrically Isolated Bearing	Not Electrically Isolated
Feedback Device	NO FEEDBACK
Heater Indicator	No Heater
High Voltage Full Load Amps	24.0 a
Insulation Class	F
Inverter Code	Inverter Duty
IP Rating	NONE
KVA Code	H
Lifting Lugs	Standard Lifting Lugs
Locked Bearing Indicator	Locked Bearing
Max Speed	1800 rpm
Motor Lead Termination	Flying Leads
Motor Standards	NEMA
Motor Type	1062M
Mounting Arrangement	F1
Number of Poles	6
Overall Length	28.61 IN
Power Factor	78
Product Family	Hazardous Location Motor
Pulley Face Code	Standard
Rodent Screen	None
Service Factor	1.00
Shaft Diameter	1.875 IN
Shaft Ground Indicator	No Shaft Grounding
Shaft Rotation	Reversible
Speed	1180 rpm
Speed Code	Single Speed
Starting Method	Direct on line
Thermal Device - Bearing	None
Thermal Device - Winding	Normally Closed Thermostat
Vibration Sensor Indicator	No Vibration Sensor
Winding Thermal 1	None

Winding Thermal 2

None

XP Temp Code

T3C

Nameplate

NP0887XPSLEV

NO.		CC	010A		
S/N		TEMP CODE	T3C		
SPEC.	10-0000-2093	INV.TYPE	PWM		
CAT.NO.	XM28262T	C HP FR	60	C HP TO	90
HP	20//15	CT HZ FROM	6	CT HZ TO	60
VOLTS	230/460//190/380	VT HZ FROM	6	VT HZ TO	60
AMPS	52/26//48/24	MAG CUR	24.6/12.3		
RPM	1180//980	MX RPM	1800		
HZ	60//50	PH	3	CL	F
		NOM.EFF.	93		
SER.F.	1.00	DES	A	SL HZ	1
		WK2	7.59		
FRAME	286T	RATING	40C AMB-CONT		
	NEMA MG-1 PART 5, IP54				
	1.15 SF ON SINE WAVE				

AC Induction Motor Performance Data

Record # 47246

Typical performance - not guaranteed values

Winding: 10WGX978-R014		Type: 1062M	Enclosure: TEFC
Nameplate Data		460 V, 60 Hz: High Voltage Connection	
Rated Output (HP)	20	Full Load Torque	89 LB-FT
Volts	230/460	Start Configuration	direct on line
Full Load Amps	52/26	Breakdown Torque	286.9 LB-FT
R.P.M.	1180	Pull-up Torque	113 LB-FT
Hz	60 Phase	Locked-rotor Torque	160.5 LB-FT
NEMA Design Code	A KVA Code	Starting Current	171.6 A
Service Factor (S.F.)	1.15	No-load Current	12.3 A
NEMA Nom. Eff.	93 Power Factor	Line-line Res. @ 25°C	0.362 Ω
Rating - Duty	40C AMB-CONT	Temp. Rise @ Rated Load	47°C
S.F. Amps		Temp. Rise @ S.F. Load	59°C
		Rotor inertia	7.59 LB-FT ²

Load Characteristics 460 V, 60 Hz, 20 HP

% of Rated Load	25	50	75	100	125	150	S.F.
Power Factor	39	61	72	78	80	81	79
Efficiency	88.5	92.5	93.3	93.2	92.6	91.7	92.8
Speed	1195	1191	1187	1183	1178	1173	1180
Line amperes	13.6	16.9	21	25.9	31.4	37.7	29.2

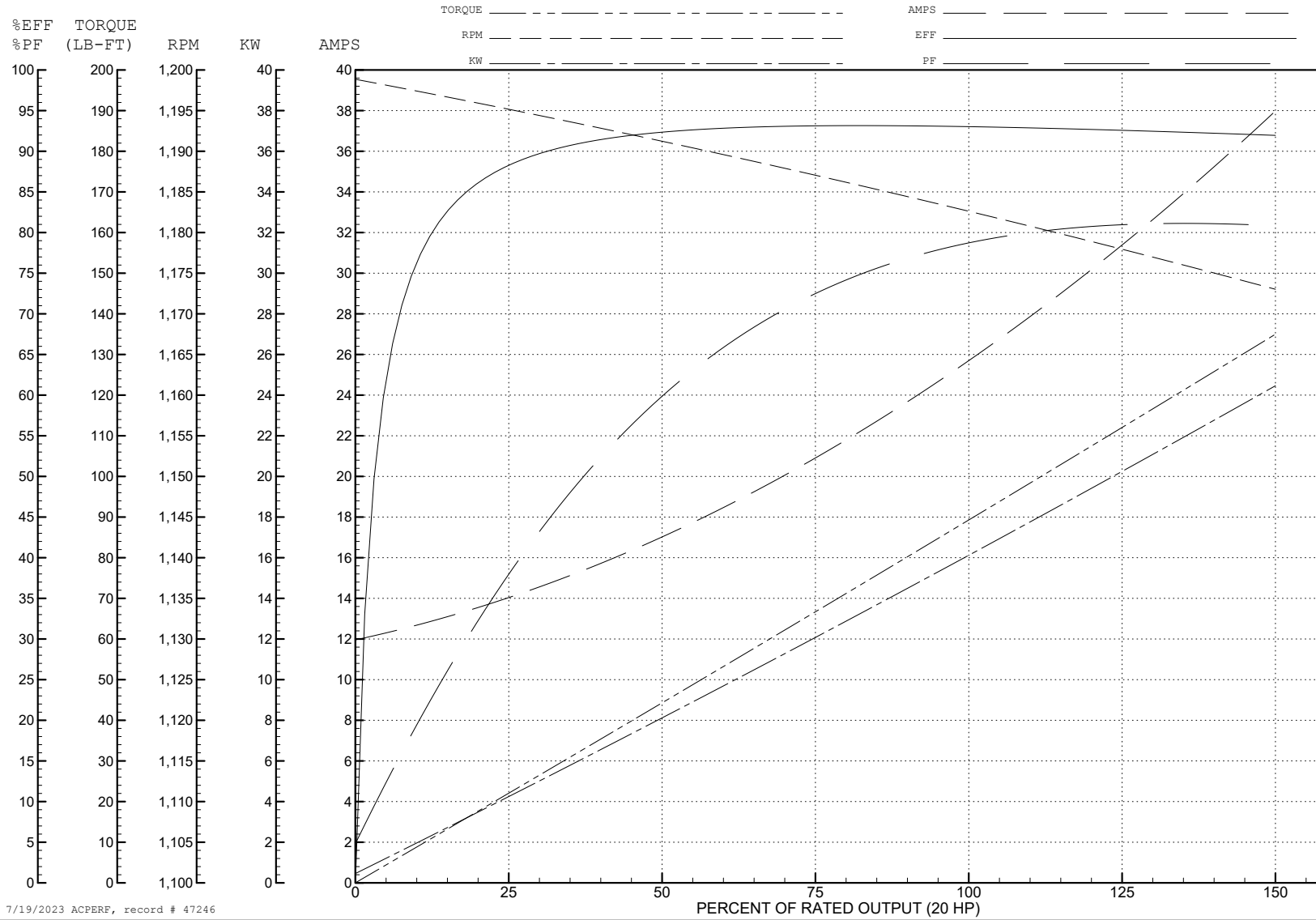
ABB Motors and Mechanical Inc.

WINDING # 10WG978

Typical performance - not guaranteed values.

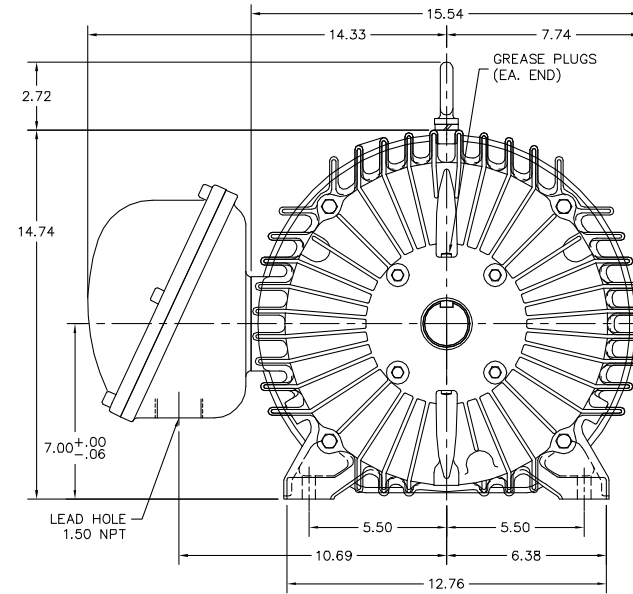
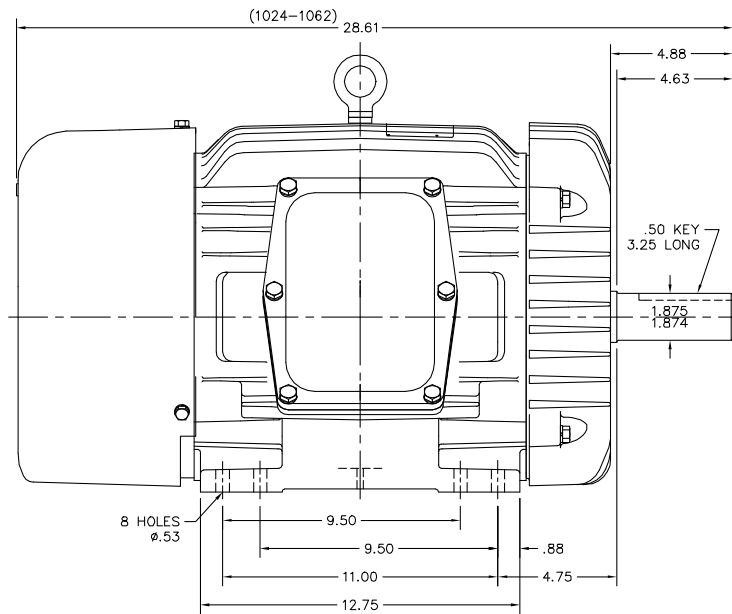
20 HP 3 PH 60 HZ 1180 RPM 460 V 1062M

TORQUES (LB-FT): PO=286.9 PU=113 LR=160.5 LRA=171.6



7/19/2023 ACPERF, record # 47246

10LVE106



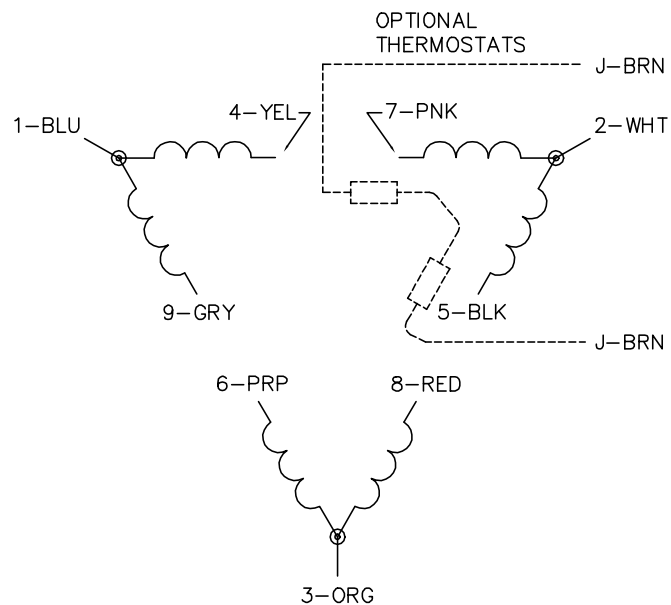
10LVE106

CUSTOMER IS RESPONSIBLE FOR DETERMINING THAT BALDOR'S PRODUCT WILL PERFORM SUITABLY IN THE INTENDED APPLICATION.

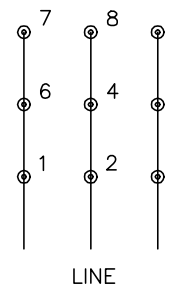
REV. DESC: ADDED 1062 STACK		
REV. LTR: M	VERSION: 04	TDR: 000001123693
FILE: \AAA\00001\944	REVISED: 01:49:53 05/05/2021	BY: USEROLI
MTL: -		

BALDOR - RELIANCE[®]
 HORZ XPFC 284-6T CL.I GP.D,CL.II GP.F&G
 SH 1 of 1

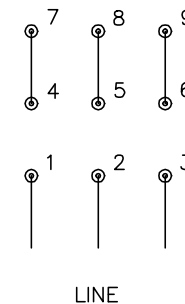
CD0180



LOW VOLTAGE
(2D)



HIGH VOLTAGE
(1D)



NOTES:

1. INTERCHANGE ANY TWO LINE LEADS TO REVERSE ROTATION.
2. OPTIONAL THERMOSTATS ARE PROVIDED WHEN SPECIFIED.
3. ACTUAL NUMBER OF INTERNAL PARALLEL CIRCUITS MAY BE A MULTIPLE OF THOSE SHOWN ABOVE.
4. LEAD COLORS ARE OPTIONAL. LEADS MUST ALWAYS BE NUMBERED AS SHOWN.

CD0180

REV. DESC: ADD CLASS CONN00000007		
REV. LTR: D	VERSION: 01	TDR: 000001099922
FILE: \AAA\00005\148	REVISED: 10: 25: 29 02/19/2019	BY: ENBRIRO
MTL: -	© □	

BALDOR - RELIANCE®

3PH, DV, 9 LEADS, DELTA CONNECTION

SH 1 of 1